

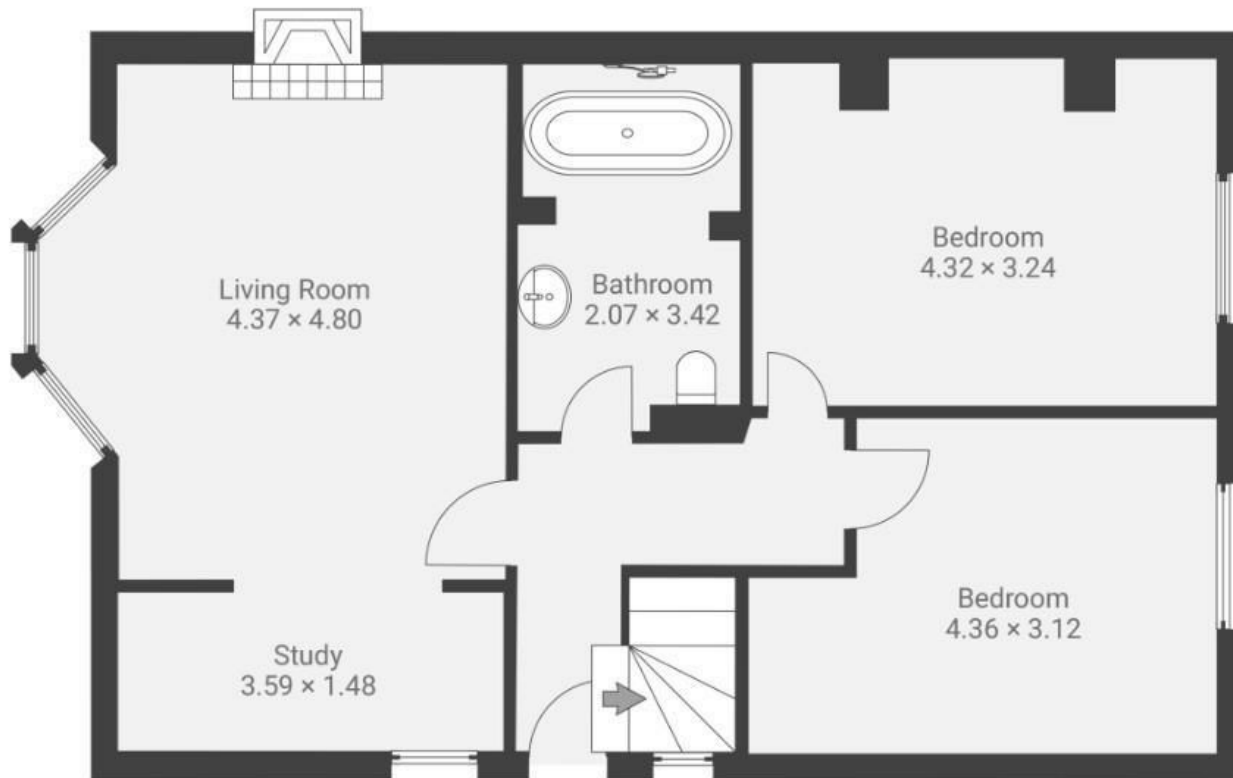
Elmgrove Road

C O T H A M

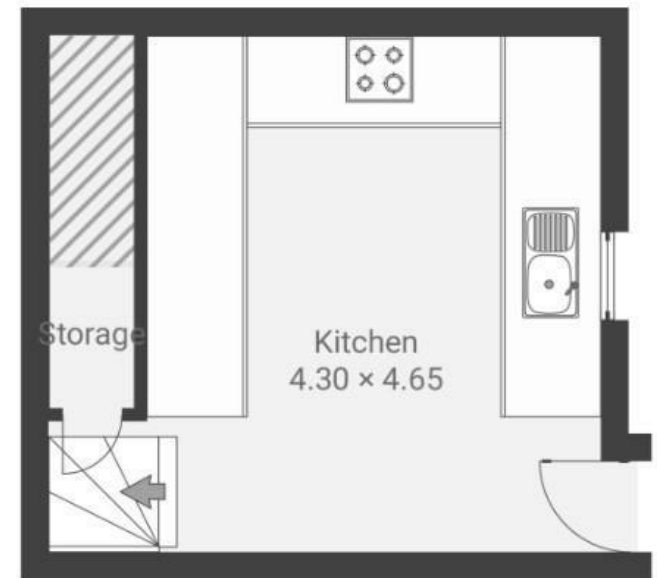
APPROXIMATE FLOOR AREA
85.0 SQM / 914 SQFT



GROUND FLOOR



LOWER GROUND FLOOR



Boardwalk

Elmgrove Road

REDLAND, BRISTOL

£

£515,000



BS6 6AH

zzz

2 Bedrooms



1 Bathrooms

I was immediately captured by how light and airy this home is, with such a beautiful, secluded garden. Having lived here, I then also appreciated how cosy it is in winter, with the log burner in the living room.'

